

ALU

PROFILE

DD1 / DD1 QR / DD2

Instrukcja montażu / instruction manual /
instructies / anleitung

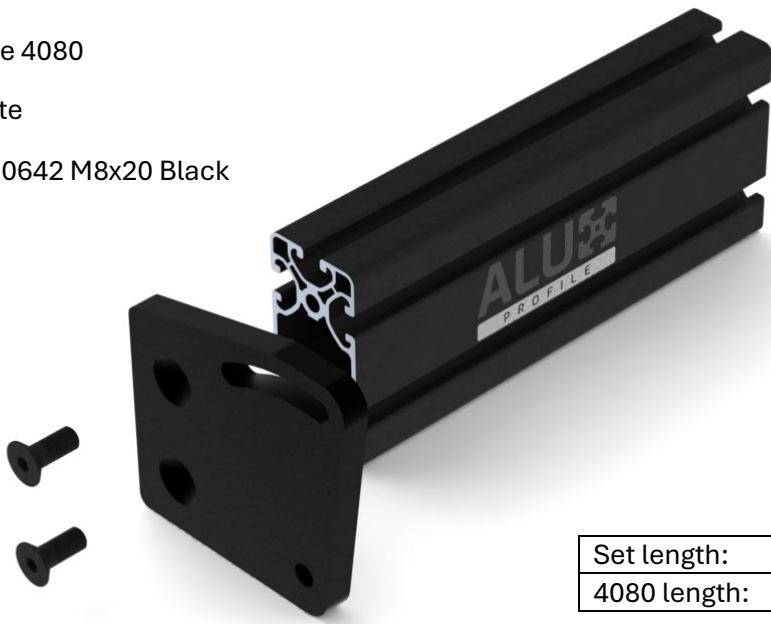


1.

1x Profile 4080

1x L-plate

2x ISO 10642 M8x20 Black



Set length:	600mm	500mm	X
4080 length:	199mm	149mm	$=(X-202)/2$



2.

1x Profile 4080

1x R-plate

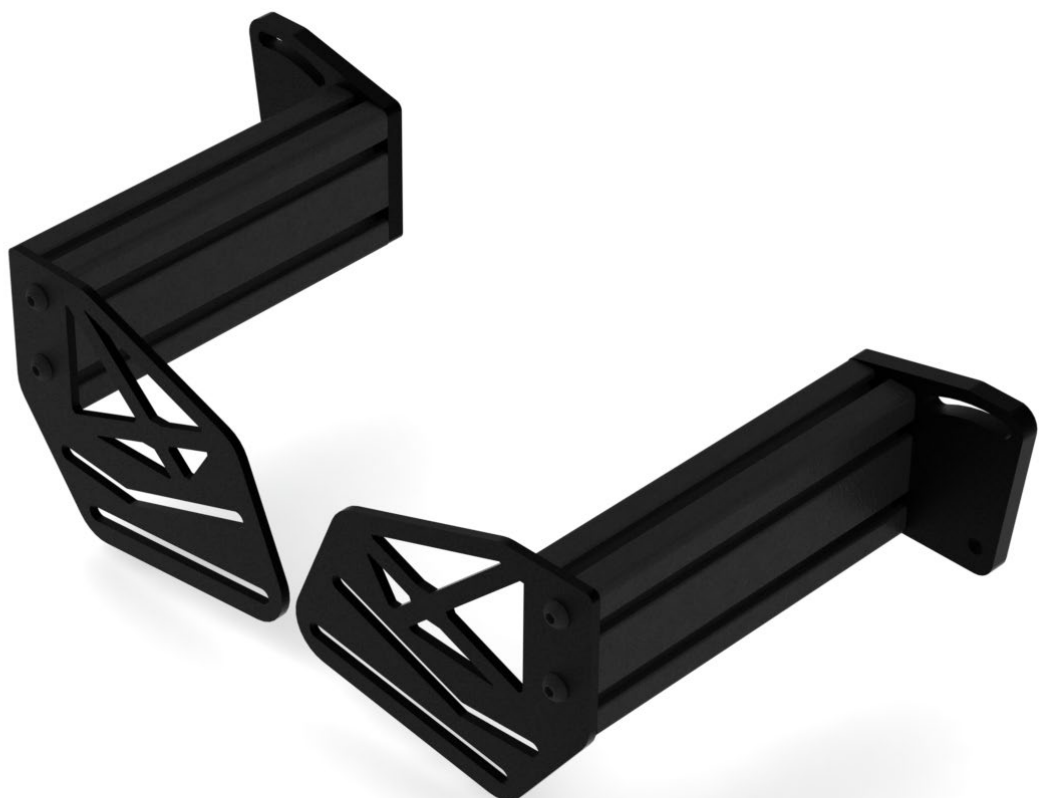
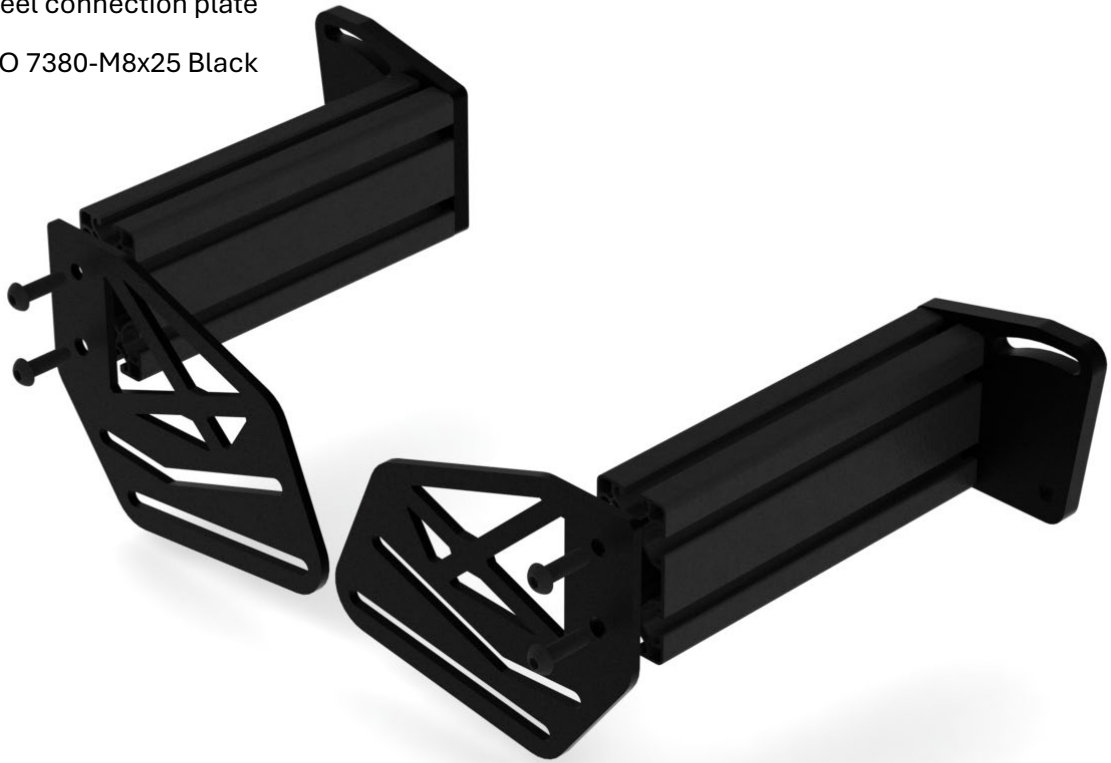
2x ISO 10642 M8x16 Black



3.

2x Steel connection plate

4x ISO 7380-M8x25 Black



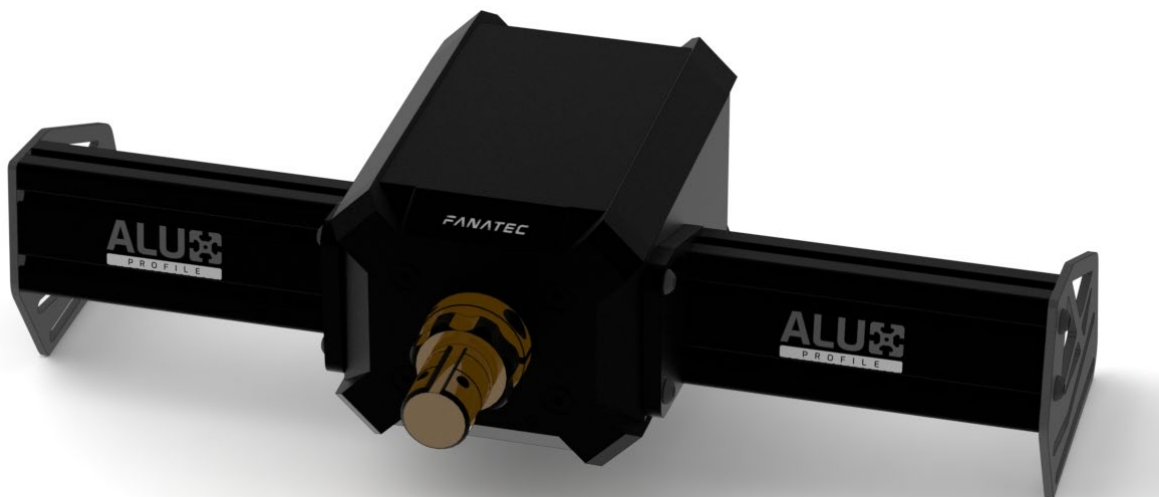
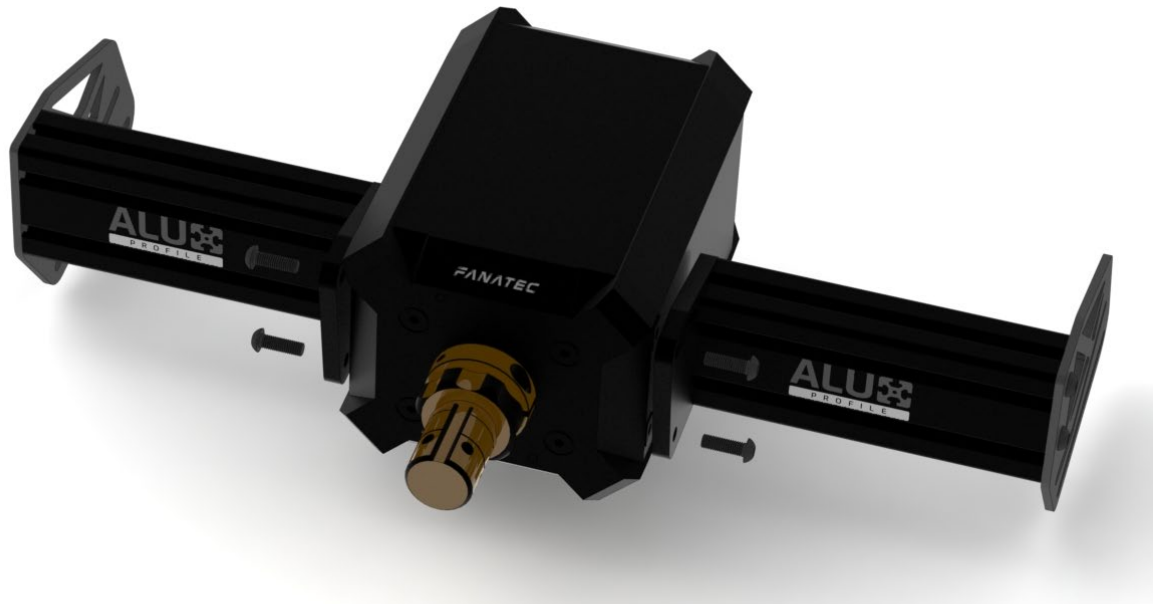
4.

1x Direct drive base



5.

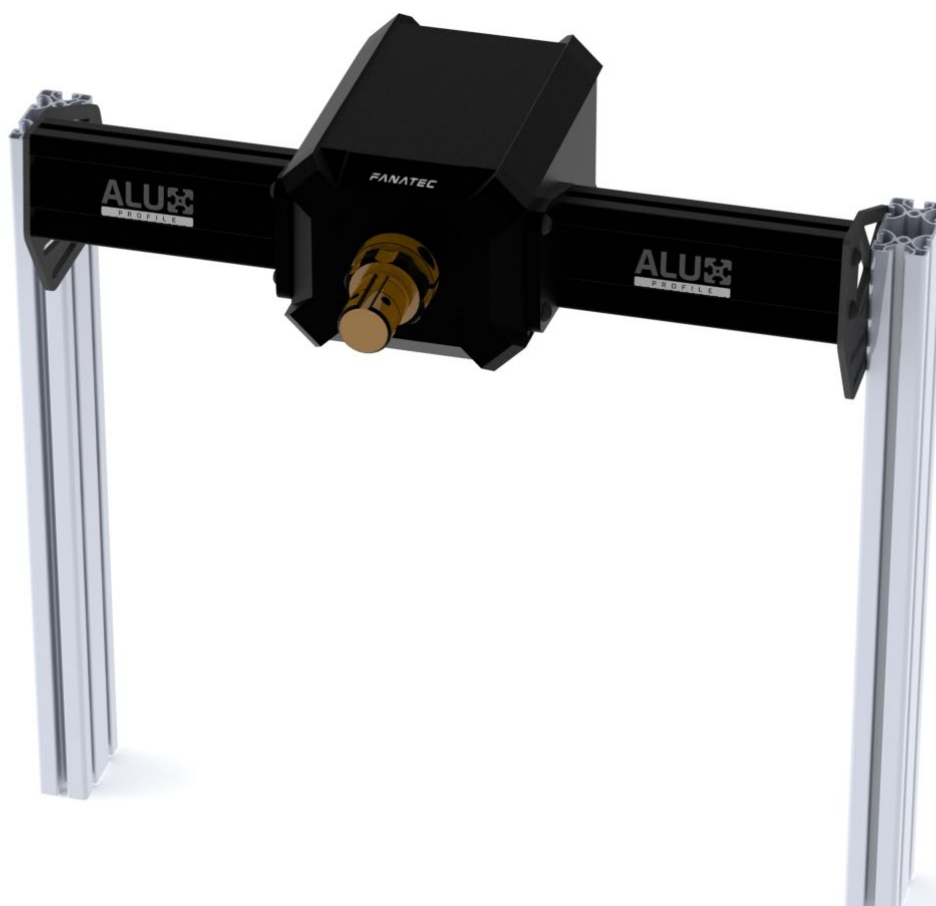
4x ISO 7380-M8x25 Black



6.

8x ISO 7380-M8x16 Black

8x 8-4-M8.40



ALU3
PROFILE

Alux Profile Sp. z o.o. – PL7941831978 – info@aluxprofile.pl